



BAYMAX/NEMO

Multi-Purpose DP2 Self Propelled Jack-up



Thong Yong Group

Tel: +65 62614800; Fax: +65 62614200
liftboatcharter@tym-group.com



Owner: Thong Yong Group
Builder: CMHI, China
Type: GustoMSC NG1800X
Built: 3Q 2018
Flag: Singapore

Class Notation

ABS, A1, Self Elevating Unit, AMS, ACCU, DPS-2, HELIDK, CRC, Wind IMR

Main Dimensions

Hull

Length Overall: 70.0 m
Hull Length: 56.0 m
Hull Width: 32.0 m
Hull Depth: 5.5 m
Draft: 3.5 m
Extreme Draft: 5.1m (incl. thrusters)
Variable Load: 650 ton @ max. draft
Deck Area: 640 m²
Deck Strength: 5.0 ton/m²
Max. Water Depth: 55 m

Helideck

Helicopter Type: Sikorsky S61 / S92
D-Value: 22.2 m diameter

Jacking System

Type: Rack and Pinion
Drive: Electric
No. of Pinions: 2 x 24
Normal Jacking: 90t per pinion
Pre-load Capacity: 153t per pinion
Hull Lifting Speed: 0.16-0.8 m/min
Leg Handling Speed: 0.16-1.2 m/min

Legs and Spudcans

Number: 4
Type: Triangular truss-type
Width: 4.0 m
Length Overall: 76.0 m
Reaction Force: 2050 ton
Footing Area: 30 m²
Spudcan Type: Can with Pin
Jetting system: Available



Accommodation and Facilities

Single Berth: 6 x 1 berth (6 Men)
Double Berth: 2 x 2 berth (4 Men)
Four(4) men Berth: 35 x 4 berth (140 Men)
Total Complement: 150 Persons
Cabins equipped with en-suit shower/toilet, telephone, TV and network connections.
All cabins fully air-conditioned.

Facilities

Galley, Mess Room, Laundry, Prayer Room, TV Room, Change Room, Internet Room, Gym, Coffee Room, Meeting Room, Office, WIFI Facility, Hospital.

Crane

Main Crane

HUISMAN 160mt Pedestal Mounted Crane
Main Hoist: 160ton @ 16m
42ton @ 43.5m
Whip Hoist: 15ton @ all radii(10.5m~54m)

Auxiliary Crane

Macgregor 15mt Pedestal Mounted Crane
Main Hoist: 15ton @ all radii (4m~25m)
Whip Hoist: 5ton @ all radii (5m~30m)

Propulsion System

Thruster: 4 x 825kW Azimuth Thruster
Size: 1.7m propeller diameter
Speed: 6 Knots

Power

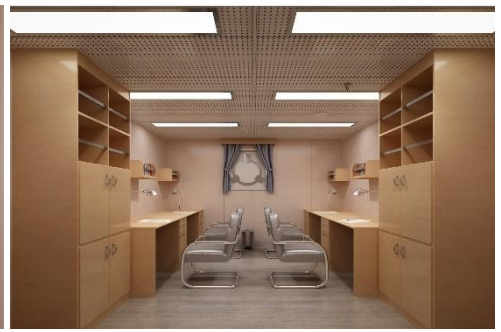
Four Main Diesel Engine, 1300ekW Generator, 690V, 60Hz, Caterpillar 3512C
One Emergency Generator Set, 425ekW 440V, 60Hz, Caterpillar C18

Control Systems

Kongsberg Dynamic Positioning Control System according to ABS DP2.
Navigation and Communication systems according to IMO Requirements.

Tank Capacity

Portable Water: 330 m³



Fuel Tank: 330 m³
Water Ballast: 909 m³
21 days with full complement

Safety Equipment

Lifeboats: 2 x 150 persons
Liferafts: 6 x 25 persons
Rescue Boat: 1 x 6 persons
Water Mist: Engine and Galley
Sprinkler: All accommodation covered
Fire and Gas detectors throughout the vessel.
EEBD & SCBA Available

Auxiliary Equipment

Water Maker: 2 set, 40 ton/day each
Sewage Treatment: 1 set, 150 men/day

Design Temperature

Steel Design Temperature

-10°C (except Spudcan)
0°C for Spudcan

For AC and Ventilation System

Max. Ambient Temperature: +46°C, 60%
Min. Ambient Temperature: 0°C
Max. Seawater Temperature: +35°C
Min. Seawater Temperature: +4 °C

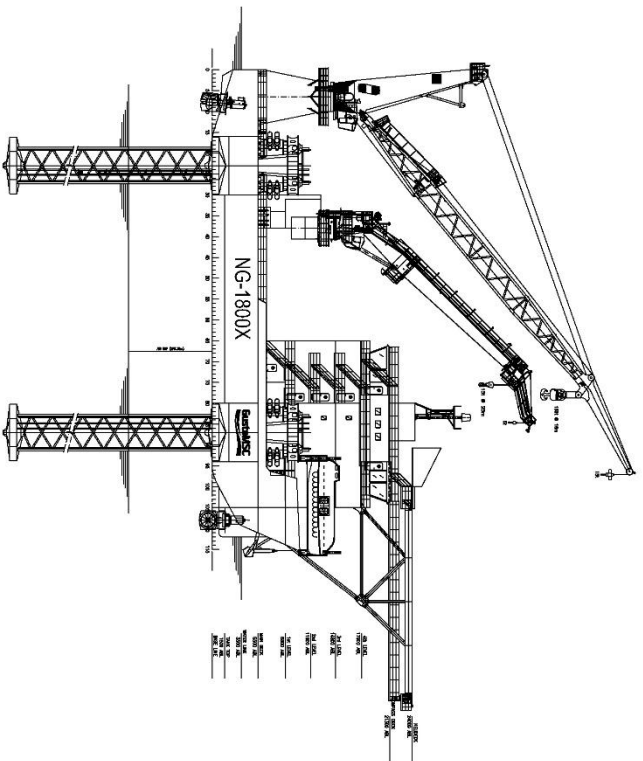
Design Criteria

	Operating	Survival
Water Depth:	55.0m	40.0m
Air Gap:	5.5m	4.0m
Wind Velocity:	25.0m/s	51.4m/s
Max. Wave Height:	5.0m	4.0m
Wave Period:	7.0s	6.0s
Surface Current:	1.0m/s	0.5m/s

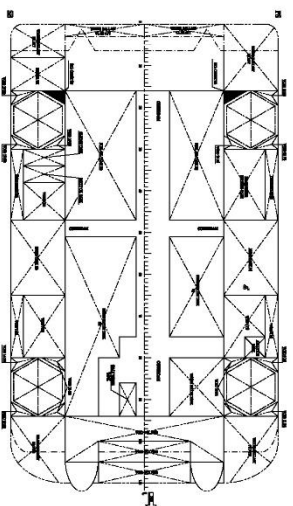


Thong Yong Group

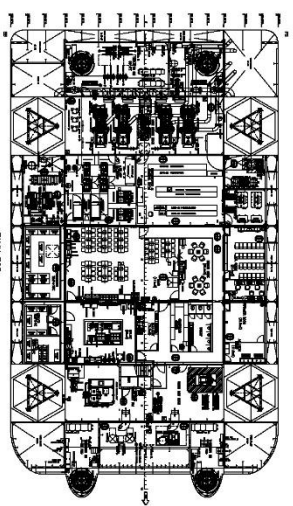
Tel: +65 62614800; Fax: +65 62614200
liftboatcharter@tym-group.com



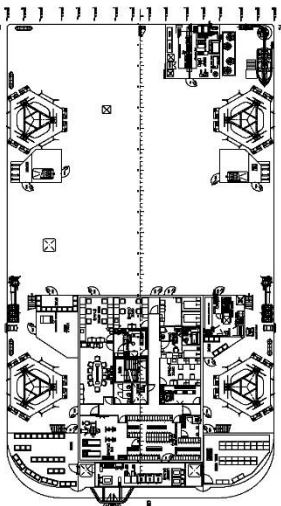
SIDE VIEW



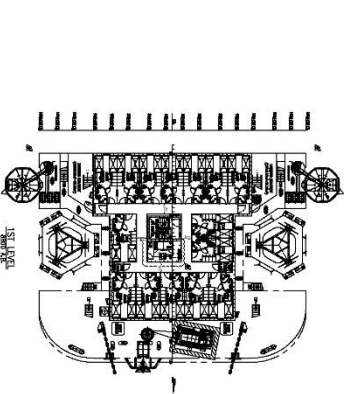
DOUBLE BOTTOM



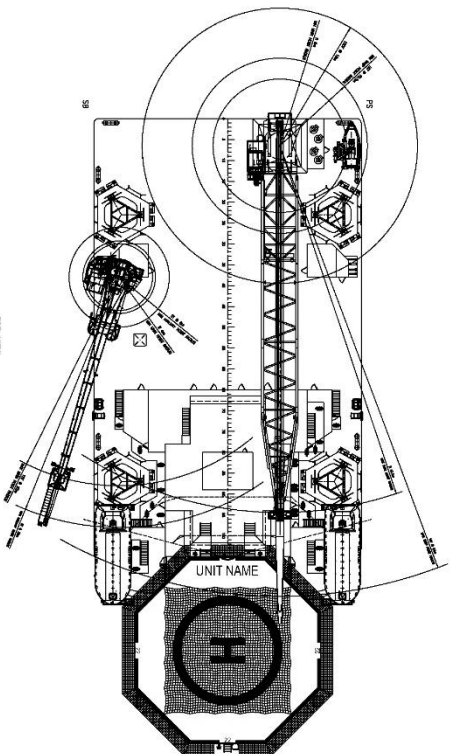
TANK TOP



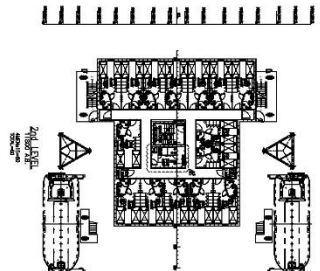
MAIN DECK



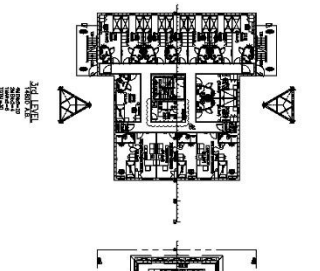
1ST DECK



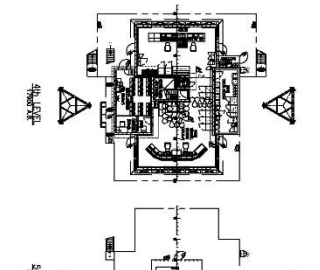
TOP VIEW



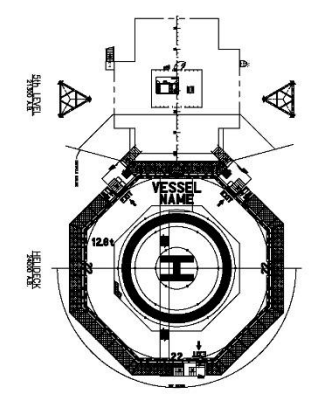
2ND DECK



3RD DECK



4TH DECK



VESSEL NAME

GENERAL DIMENSIONS
 LENGTH 180.00 M
 WIDTH 24.00 M
 DRAUGHT 12.00 M
 ACCOMMODATION 120 P

TY MARINE PTE LTD.	
CHINA RESEARCH & DESIGN GROUP CO., LTD.	
NO. 1800X	CHART 18-12
DATE	DATE
BY	BY
CHECKED	CHECKED
APPROVED	APPROVED
GENERAL ARRANGEMENT PLAN	
SCALE	SCALE
DATE	DATE
BY	BY
CHECKED	CHECKED
APPROVED	APPROVED