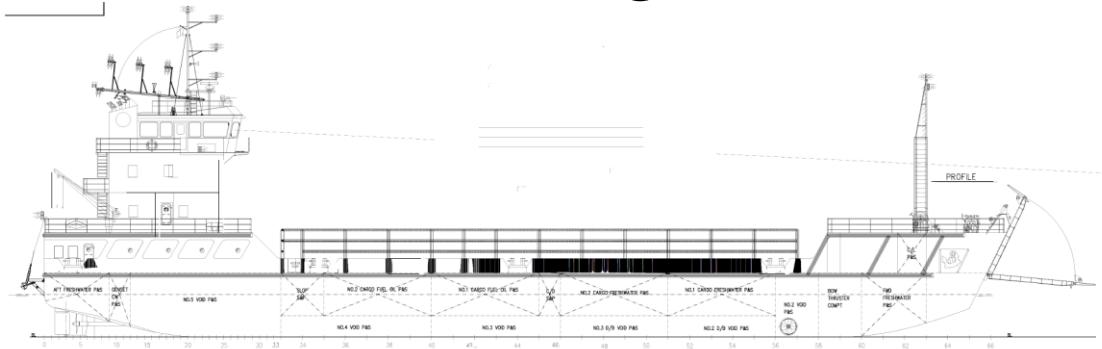




66m Landing Craft



SPECIFICATION

Main Particulars:

Length O.A	: 66 m
Breadth Moulded	: 18 m
Depth moulded	: 4.5 m
Draft	: 3 m (fully loaded)
Deck Area	: 700 m ²

Performance:

Speed	: 10 knots
-------	------------

Classification:

BV1 + Hull + Mach Deck Ship for Unrestricted Service

Main Machinery:

Main Engines	: 2 x 590Kw Cummins Engine
Generators	: 3 x Cummins 80eKw X 1500 RPM , 415/3/50
Bow Thruster	: 1 x 5 Tonnes Thrust , Diesel Engine Driven
Rescue Boat & Davit	: SOLAS approved, 6 person carrying capacity rescue boat

Deck Machinery:

Windlass	: 2 x Electro-hydraulic
Ramp Winches	: 2 x Electro-hydraulic
Aft Winch	: 1 x Electro-hydraulic

Tankage:

Ship's F.O.	: 160 m ³ approx.
Ship's F.W.	: 140 m ³ approx.
Cargo F.O.	: 645 m ³ approx.
Cargo F.W.	: 745 m ³ approx.

Landing Deck Particulars:

Deck Strength	: 7.5 ton/m ²
Ramp Door (Width x Length)	: 11m x 6m +1.5m flap

Containers (TEU):

Pad eyes and D-ring installed
Crash Rails (P&S) Side
Total : 90 TEU

Communication & Navigation Equipment for Unrestricted Service.

Particulars given are entirely without warranty as to correctness and interested parties must satisfy themselves by inspection of ship's certificate or by other means of vessel specifications.