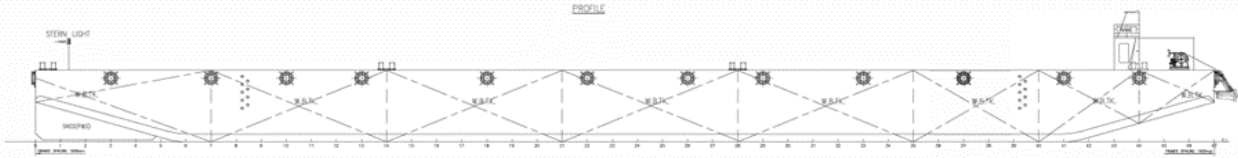




## TYM OFFSHORE PTE. LTD.

2 Venture Drive #10-32 Vision Exchange,  
Singapore 608526  
Tel: (65) 6261 4800  
[enquiry@tym-group.com](mailto:enquiry@tym-group.com)

# Flat Top Deck Cargo & Ballast Tank Barge



### GENERAL PARTICULARS

Vessel Name : MIGHTY 2  
Flag : Singapore  
Year Built : 2024  
Classification : American Bureau Of Shipping, ABS  
Notation : ✠ A1, Barge

### PRINCIPAL DIMENSIONS

Length Moulded : 282ft (86.01m)  
Breadth Moulded : 90ft (27.45m)  
Depth Moulded : 18ft (5.49m)  
Deck Strength : 20 tons/m<sup>2</sup>  
Deadweight : Approx. 7,500 Tons  
No. of Compartments : 24 ballast tanks + 1 pump room  
No. of Bulkheads : 3 Longitudinal & 6 Transverse

### DECK EQUIPMENT

Anchor : 1 x 1,920kg stockless anchor  
Anchor Winch : 1 set of 8 Tons capacity  
: Diesel-driven winch c/w one length of 25mm dia x 150m of steel wire rope  
Towing Brackets : 2 Smit type towing pads at bow and aft of the barge, 1 emergency towing bracket  
Navigation Light Stands : 3 units

### SCANTLING

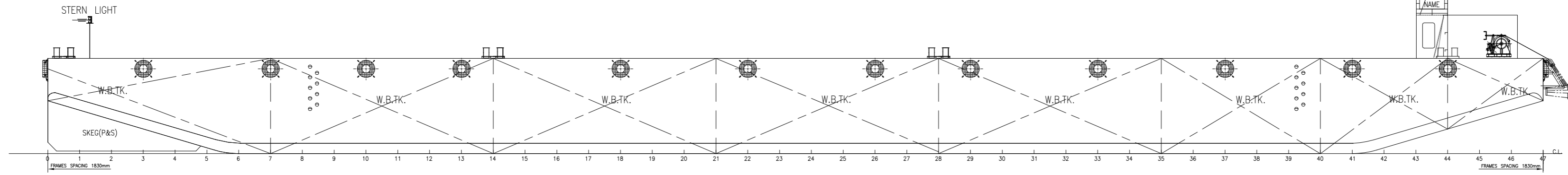
Deck Plating : 16mm  
Bottom Plating : 12mm  
Side Shell Plating : 12mm

### Pump room

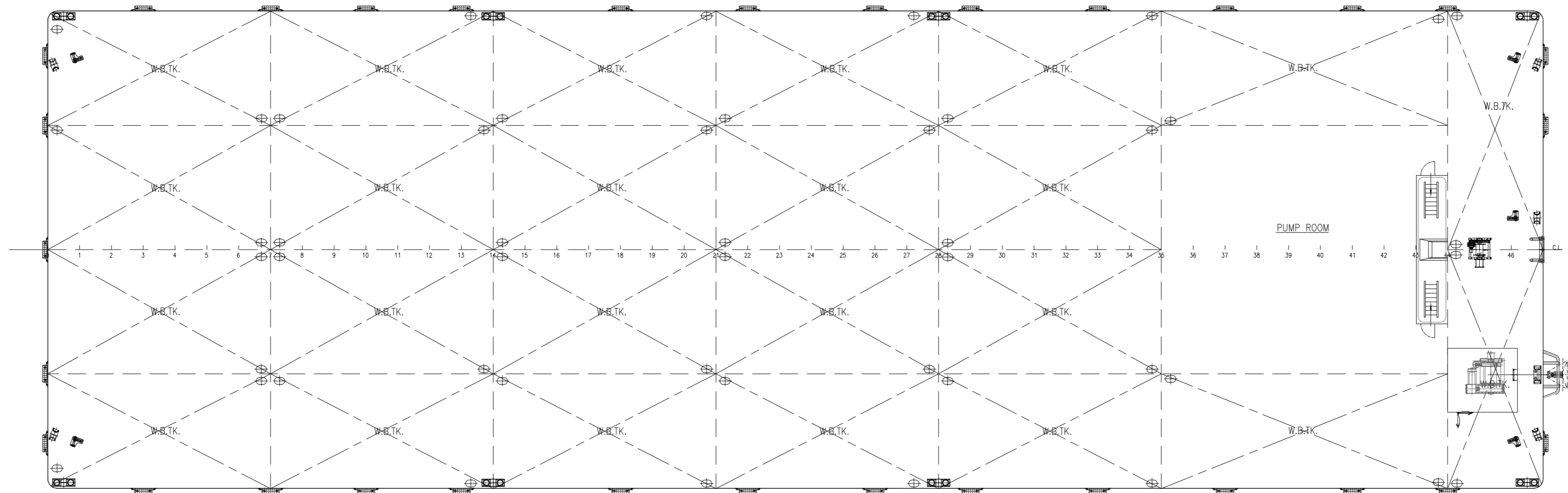
2 x Generators  
1 x Ballast Water Treatment System @500 m<sup>3</sup>/hr  
2 x Ballast Pump @ 500m<sup>3</sup>/hr

Particulars given are entirely without warranty as to correctness and interested parties must satisfy themselves by inspection of ship's certificate or by other means of vessel specifications.

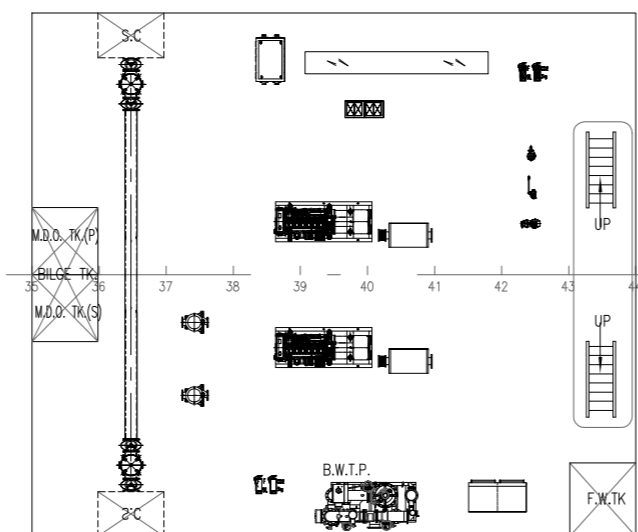
PROFILE



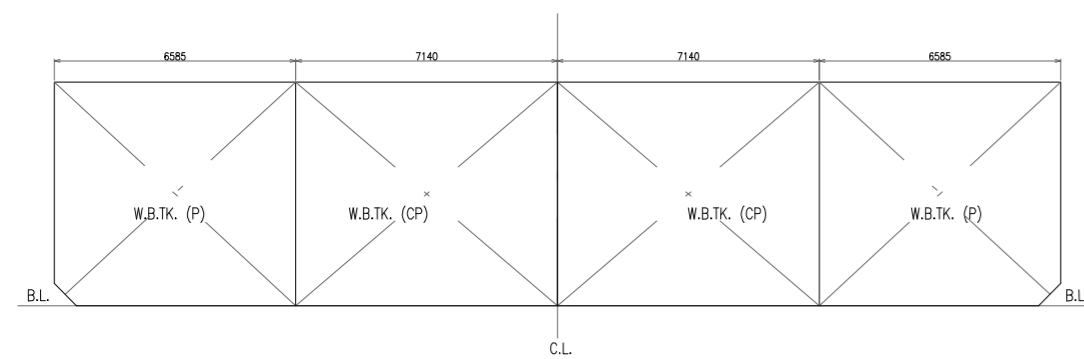
MAINDECK



PUMP ROOM



SECTION



PRINCIPAL DIMENSIONS

LENGTH OVER ALL	282'(86.01) m
BREADTH (MOULDED)	90'(27.45) m
DEPTH (MOULDED)	18'(5.49) m
FRAMES SPACING	1.830m
DECK LOADING	20t/m <sup>2</sup>