



THONG YONG

THONG YONG GROUP

P.O. Box 48709, Al Quoz Industrial Area 4, Dubai, U.A.E.

Tel #: +971 4 3417556 / Fax #: +971 4 3415899

Email : enquiry@tym-group.com / marine.admin@tym-group.com

BELLONA

365ft x 92ft x 22ft CARGO BARGE



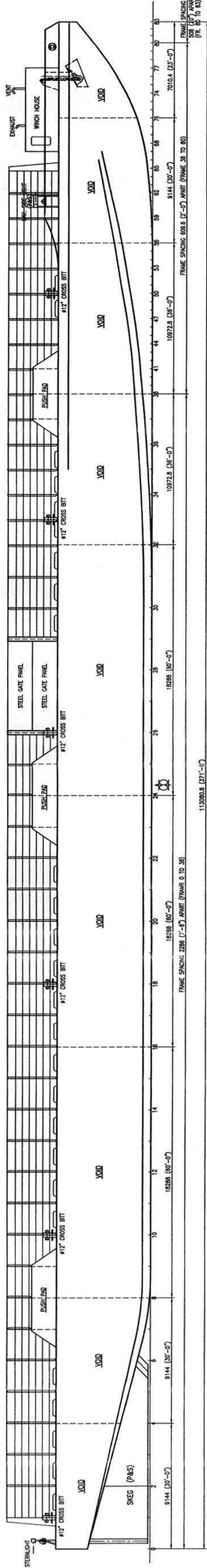
PRINCIPAL PARTICULARS

Port Of Registry	: Singapore
Official Number	: 394223
Port Number	: 01958-A/08
Year Built	: 2008
Place Built	: Nanjing, China
Classification	: American Bureau of Shipping, ABS
Navigational Area	: International

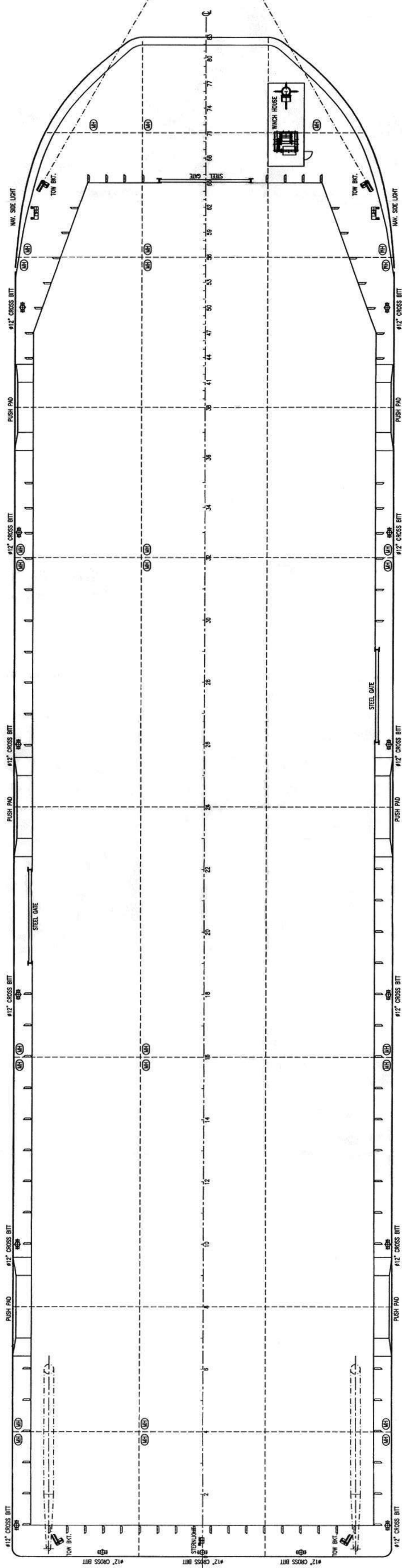
DIMENSIONS

Length Overall	: 111.252m [365ft]
Breadth (moulded)	: 28.042m [92ft]
Depth (moulded)	: 6.934m [22ft]
Max Draft	: 5.415m
GRT / NT	: 5,308 / 1,592
Displacement	: Approx. 14,369.20 ton
Lightship Weight	: Approx. 2,125.22 ton
Deadweight	: Approx. 12,243.98 ton
Deck Strength	: 10 ton/m ² , 2 L-BHDS
Deck's Fitting	: a). 1 Winchhouse inclusive 1 x 10T Anchor Winch b). 1 x 2,850kg Stockless Bow Anchor c). Two (2) Smit Towing Bracket d). Eighteen (18) Single Post Mooring Bollards of 12' N.B. Heavy Pipe e). Sufficient 15kg Alum. Anode for two (2) years Protection f). Three (3) Navigation Light Stand with Battery Box g). Sufficient Rubber Tyre Fenders for Barge Protection
Sideboard	: 12ft High All Around

Particulars given are entirely without warranty as to correctness and interested parties must satisfy themselves by inspection of ship's certificate or by other means of vessel specifications.



115065.8 (371'-5")



SHIP'S COPY
 NOT REVIEWED
 Acknowledged for Record
 Only
 28 JAN 2008
 ABS Singapore

PRINCIPAL PARTICULARS
 LENGTH O.A. 365'-0" (111.252 m)
 BREADTH MLD 92'-0" (28.042 m)
 DEPTH MLD 22'-9" (6.934 m)
 DEADWEIGHT 12,000 TONNES
 PERMISSIBLE DECK LOADING 15 TONNES/M² UDL
 ALL COMPARTMENTS ARE VOID



MARINE DESIGNS PTE. LTD.
 Blk 196, Penden Loop, #06-23, Petchen Industrial Complex
 Singapore, 128584
 Tel: 65-67732931 & 65-67731452 Fax: 65-67732728
 e-mail: mdesigns@singnet.com.sg

PROJECT : 365' x 92' x 22'-9" DECK CARGO BARGE
 TITLE : GENERAL ARRANGEMENT

DATE :	04.12.2007	SCALE :	1 : 165
DRAWN :	L.C.T.	PROJECT CODE :	P/939
CHECKED :		DWG. NO. :	939 - 1
			0

THIS DOCUMENT AND THE INFORMATION IT CONTAINS IS CONFIDENTIAL AND REMAINS THE PROPERTY OF MARINE DESIGNS PTE. LTD. IT IS TO BE USED ONLY FOR THE PROJECT AND NOT FOR ANY OTHER PURPOSES WITHOUT PRIOR WRITTEN CONSENT.