



THONG YONG GROUP

P.O. Box 48709, Al Quoz Industrial Area 4, Dubai, U.A.E.

Tel #: +971 4 3417556 / Fax #: +971 4 3415899

Email : enquiry@tym-group.com / marine.admin@tym-group.com

THONG YONG

FARICA

345ft x 90ft x 21ft CARGO BARGE



PRINCIPAL PARTICULARS

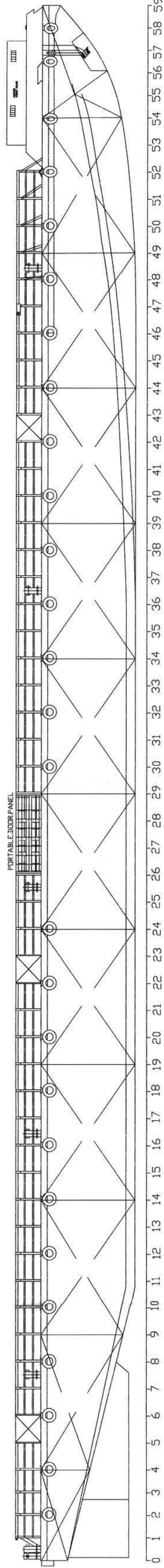
Port Of Registry	: Singapore
Year Built	: 2008
Where Built	: Nanjing, China
Classification	: Bureau Veritas, BV
Navigational Area	: International

DIMENSIONS

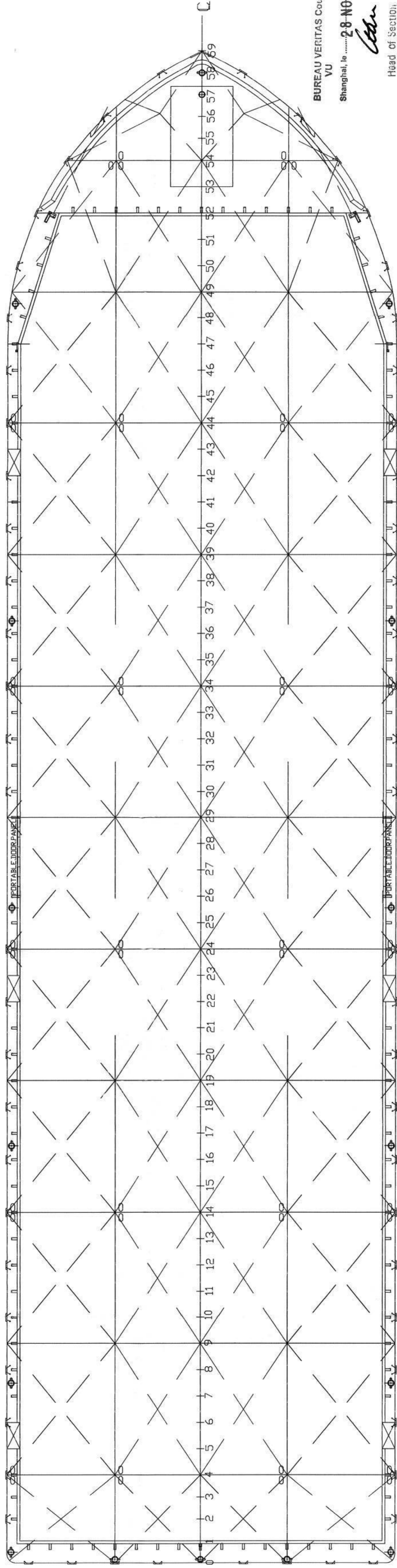
Length Overall	: 105.156m [345ft]
Breadth (moulded)	: 27.432m [90ft]
Depth (moulded)	: 6.401m [21ft]
Max Draft	: 5.02m
GRT / NT	: 4,361 / 1,308
Displacement	: Approx. 11,945.61 ton
Lightship Weight	: Approx. 1,779.21 ton
Deadweight	: Approx. 10,166.40 ton
Deck Strength	: 15 ton/m ²
Deck's Fitting	: a). 1 Winchhouse inclusive 1 x 10T Anchor Winch b). 1 x 2,900kg Stockless Bow Anchor c). Two (2) Smit Towing Bracket d). Sixteen (16) Twin Mooring Bollards at Main Deck e). Sufficient 15kg Alum. Anode for two (2) years Protection f). Three (3) Navigation Light Stand with Battery Box g). Sufficient Rubber Tyre Fenders for Barge Protection
Sideboard	: 12ft High All Around

Particulars given are entirely without warranty as to correctness and interested parties must satisfy themselves by inspection of ship's certificate or by other means of vessel specifications.

SIDE VIEW

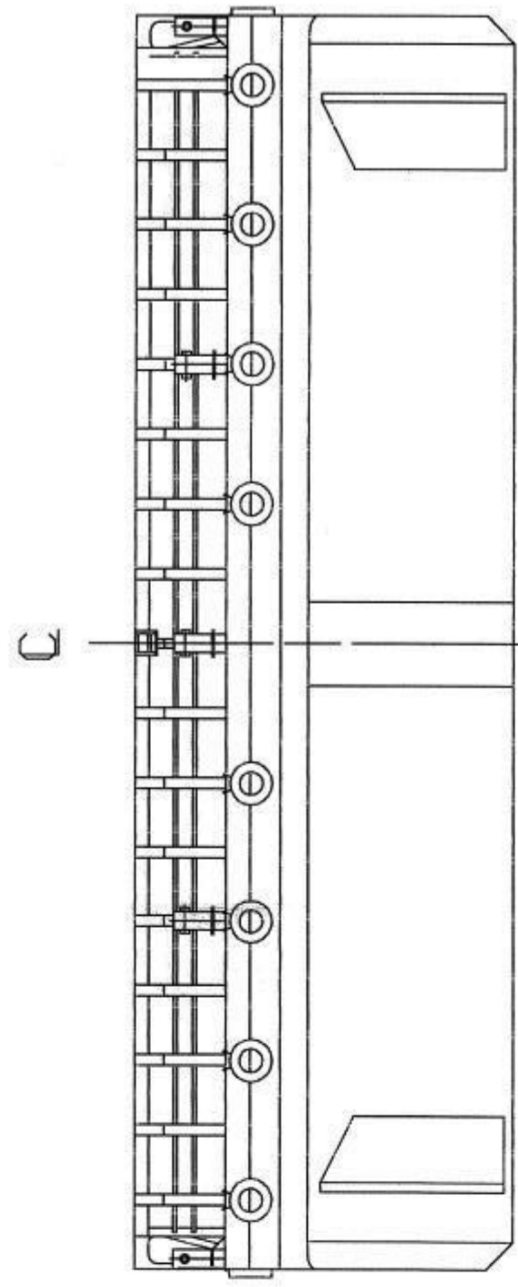


TOP VIEW

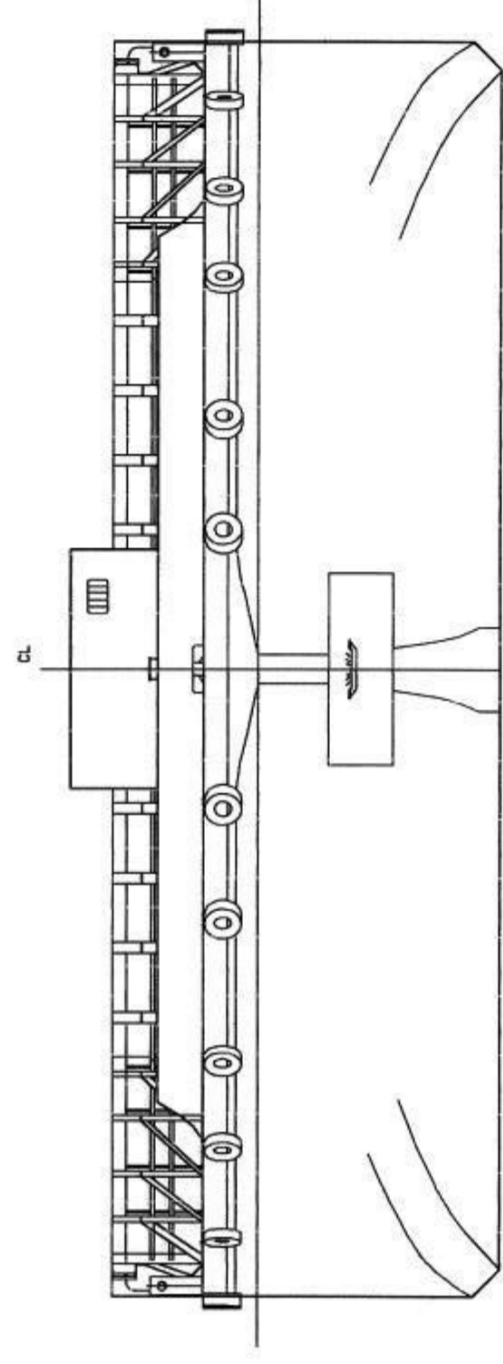


BUREAU VERITAS Coupe...
VU
Shanghai, le 28 NOV 2008

Chen
Head of Section
CHINA PLAN APPROVAL OFFICE



REAR VIEW



FRONT VIEW

DATE	MODIFICATION	BY
SHIP:	345'X90'X21' DECK CARGO BARGE	
TITLE:	GENERAL ARRANGEMENT	
OWNER	BUILDER	HULL No.
ABS	Nanjing Tong Kah Shipbuilding Co., Ltd	REV
A		
NANJING TONGKAH SHIPBUILDING CO., LTD		
Room 609-611, Hengdao Mansion, No.166 North Jiangdong Road, Nanjing, Jiangsu, China		
Tel: (86)025-98295342 Fax: (86)025-98295342		
DRAWN	CHECKED	SCALE
An Feng		
07.8.18	TRACED	DRAWING NO.
		07TH345-G1