



THONG YONG GROUP

P.O. Box 48709, Al Quoz Industrial Area 4, Dubai, U.A.E.

Tel #: +971 4 3417556 / Fax #: +971 4 3415899

Email : enquiry@tym-group.com / marine.admin@tym-group.com

THONG YONG

DELFINA

345ft x 90ft x 21ft CARGO BARGE



PRINCIPAL PARTICULARS

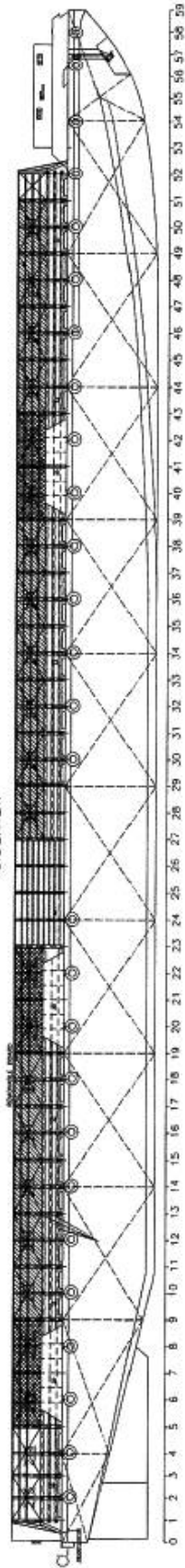
Port Of Registry	: Tanjung Priok, Jakarta
Official Number	: 1271
Port Number	: 2372/Pst
Year Built	: 2008
Place Built	: Nanjing, China
Classification	: American Bureau of Shipping, ABS
Navigational Area	: International

DIMENSIONS

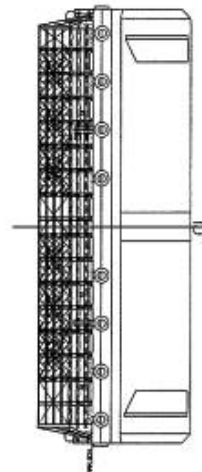
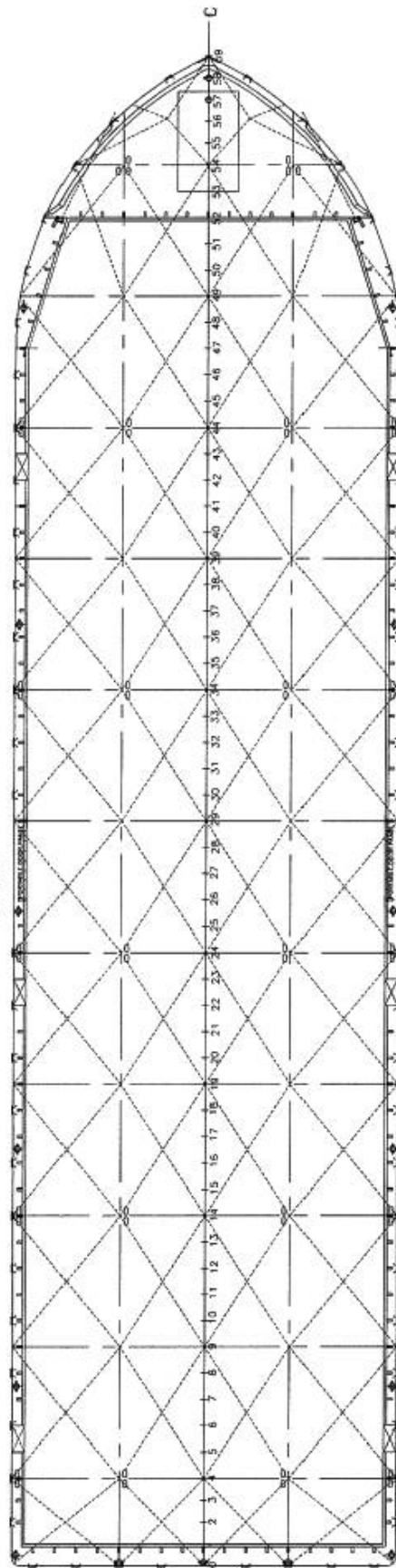
Length Overall	: 105.156m [345ft]
Breadth (moulded)	: 27.432m [90ft]
Depth (moulded)	: 6.401m [21ft]
Max Draft	: 5.012m
GRT / NT	: 4,285 / 1,285
Displacement	: Approx. 11,910 ton
Lightship Weight	: Approx. 2,052 ton
Deadweight	: Approx. 9,858 ton
Deck Strength	: 15 ton/m ²
Deck's Fitting	: a). 1 Winchhouse inclusive 1 x 10T Anchor Winch b). 1 x 2,900kg Stockless Bow Anchor c). Two (2) Smit Towing Bracket d). Sixteen (16) Twin Mooring Bollards at Main Deck e). Sufficient 15kg Alum. Anode for two (2) years Protection f). Three (3) Navigation Light Stand with Battery Box g). Sufficient Rubber Tyre Fenders for Barge Protection
Sideboard	: 12ft High All Around

Particulars given are entirely without warranty as to correctness and interested parties must satisfy themselves by inspection of ship's certificate or by other means of vessel specifications.

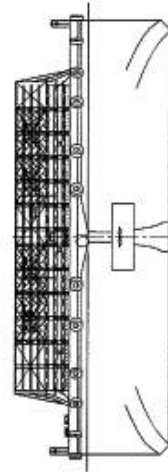
SIDE VIEW



TOP VIEW



REAR VIEW



FRONT VIEW

DATE	BY	MODIFICATION
DATE	BY	
345'X90'X21' DECK CARGO BARGE		
TITLE		
OWNER	DESIGNER	SCALE
BUILDER	MANUFACTURER	DRAWING NO.
CLASS	BY	DATE
CLASS	BY	REV.
CLASS	BY	A
CLASS	BY	A
MANJING TONGKOH SHIPBUILDING CO., LTD Room 102-611, Singapore, Manjinhua 105, North Jombang Road, Singapore, China Tel: 65-6336-8888 Fax: 65-6336-8888		
DESIGN	TRACED	CHECKED
BY	BY	BY