



THONG YONG GROUP

P.O. Box 48709, Al Quoz Industrial Area 4, Dubai, U.A.E.

Tel #: +971 4 3417556 / Fax #: +971 4 3415899

Email : enquiry@tym-group.com / marine.admin@tym-group.com

THONG YONG

KURA

32M Twin Screw Tug

PRINCIPAL PARTICULARS

OPERATING AREAS	: Sea Areas 1 + 2 + 3
TYPE OF SHIP	: Ocean Going Twin Screw Tug
FLAG	: Singapore
OFFICIAL NUMBER	: 394221
CALL SIGN	: 9V7453
IMO NUMBER	: 9516624
CLASSIFICATION	: ABS (American Bureau of Shipping)
YEAR BUILT	: 2008
PLACE BUILT	: Wuhu Dajiang Shipbuilding, China
LENGTH OVERALL	: 32.00 m
REGISTERED LENGTH	: 30.14 m
BREADTH	: 9.20 m
DEPTH	: 4.60 m
DRAFT MAX. DESIGN	: 3.80 m
GRT / NRT	: 296 / 88

STERN TUBES & SHAFTING

- * Oil Lubrication Stern Tubes
- * 2 x Length Stainless Steel (AISI 316) Tail Shaft

STEERING GEAR SYSTEMS

- *Two (2) JAMSTRAM Type Twin S2-15-1-35
- Torque 1.5TM per rudder / Rudder Angle: 35 / 35 degree
- Steering Mode: Power, Elec., Twin Independent 3.0hp

TOWING

- | | |
|------------------------|---|
| ANCHOR WINDLASS | : 22mm U2 / ME 2.1 THWL22C330
Anchor Windlass c/w Double Gypsy & Double Drum |
| BOW ANCHOR | : 2 x Stockless each 480kgs |
| CHAIN CABLE | : 302.5m total length, 22mm dia, Grade 2 |
| TOWING HOOK | : 50T SWL; remote quick release control |
| TOWING WINCH | : 1 x ME40HTW Electro Hydraulic
Double warping ends + remote control /
Static Brake Hold: 100MT 700mx44mm
Galvd. Steel Wire Rope / 1x60kW (2x30kW)
Eletro-Hyd. P.Pack |

SOUND SIGNAL APPLIANCES & NAVIGATION EQUIPMENT

- | | |
|------------------------------|------------------------------|
| VHF RADIOTELEPHONE | : ICOM IC-M504 |
| SSB TRANSCEIVER | : ICOM M710 / ATU130 |
| 24N MARINE RADAR | : FURUNO 1832 |
| GPS NAVIGATOR | : FURUNO GP 150 |
| ECHO SOUNDER | : FUSO FEC 609 |
| NAVTEX RECEIVER | : MC MURDO NAV-7 |
| WEATHER FAX | : FURUNO FX 408 |
| MAGNETIC COMPASS | : SAURA KEIKI MR-150A |
| EPIRB | : MC MURDO SMART FIND E5 |
| PUBLIC ADD./TALK BACK | : HANSHIN HPA-7306 |
| MINI C / GPS TRACKING | : KVH eTRAC |
| MARITIME MINI-M | : KVH TRACPHONE 252 |
| INTERCOM SYSTEM | : 6 STATIONS GALAXY PHONE |
| WIND ANEMOMETER | : RM YOUNG 05103-58 / 06206H |
| AUTO PILOT | : FURUNO NAV PILOT 500 |
| AIS | : FURONO MODEL FA-150 |

FIRE FIGHTING / LIFE SAVING APPLIANCES

- | | |
|---------------------------|--|
| LIFERAFT | : 2 x HNF-A15(96) for 15 Pax |
| LIFE BOUY | : SDF5556 (96) x 8 pieces |
| LIFE JACKET | : XY5564-1 x 17 pieces |
| FIREMAN'S OUTFIT | : DFXF-93-A x 1 set with accessories |
| BREATHING APP. | : RHZK-6/30-II x 1 set |
| FIRE EXTINGUISHER | : 9 x 9kg ABC Dry Powder
1 x 45litre Trolley Foam |
| PORTABLE FIRE PUMP | : CF170F / 4.5HP, 3600rpm |



PROPULSION SYSTEM

MAIN ENGINES	: MITSUBISHI S6U-MPTK MARINE ENGINE 2 x 1,500 HP @ 1,100 rpm (2 x 1,119kW)
GEAR BOX	: 2 x HITACHI - NICO MGN1524-V2 / Ratio 3.97:1
GENERATOR	: 2 x CUMMINS 6CT8.3-D (M)
ALTERNATOR	: UCM274E STAMFORD 99kW/123.75kVA
FUEL OIL PURIFIER	: KYDR203CD-23 / 2.2kW 380V/50Hz
OILY WATER SEPARATOF	: USH-05 / 0.5m ³ /h
PROPELLERS	: 2 x SOLID 4 BLADES MANGANESE BRONZE <i>Completed with MILD S KORT NOZZLE</i>

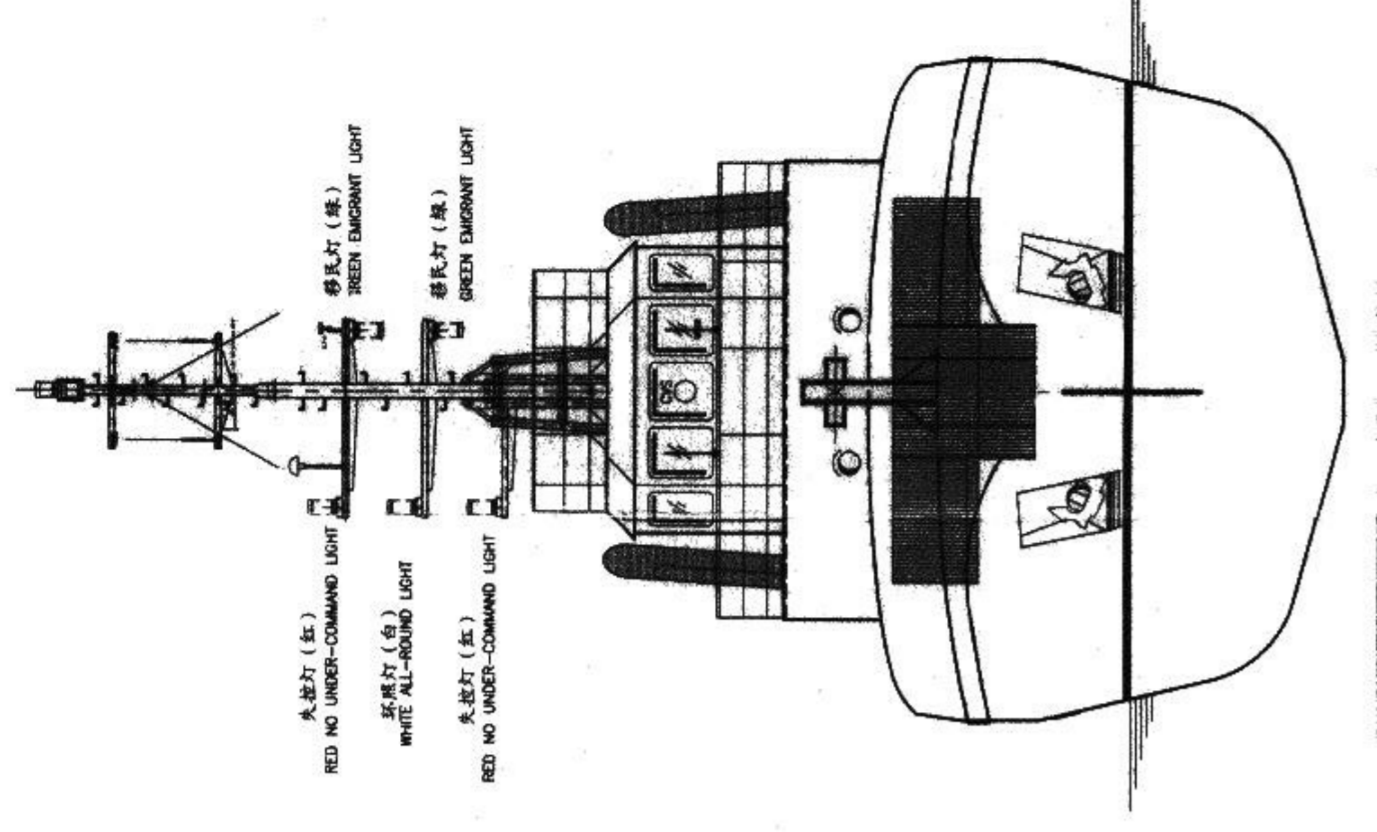
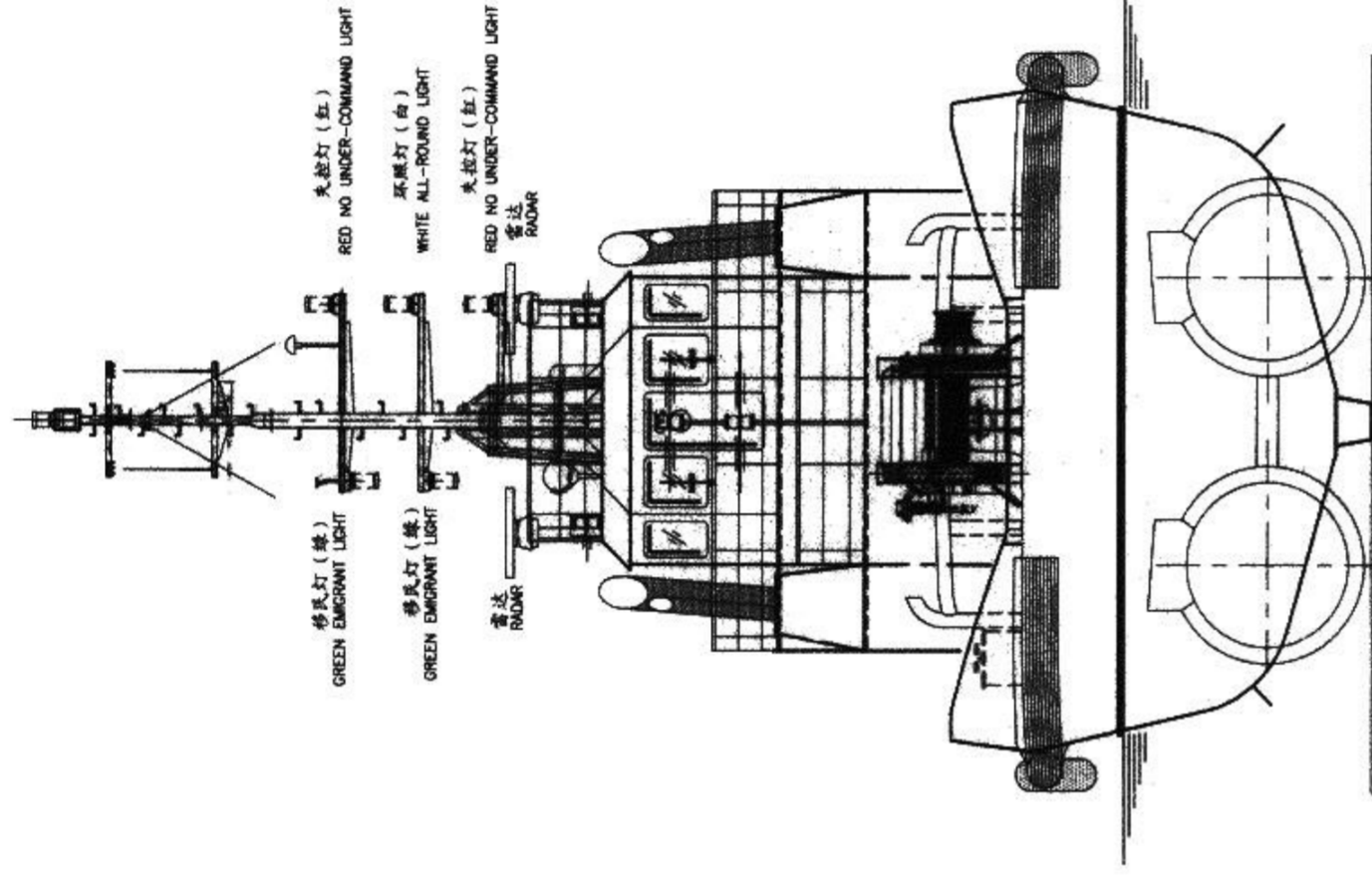
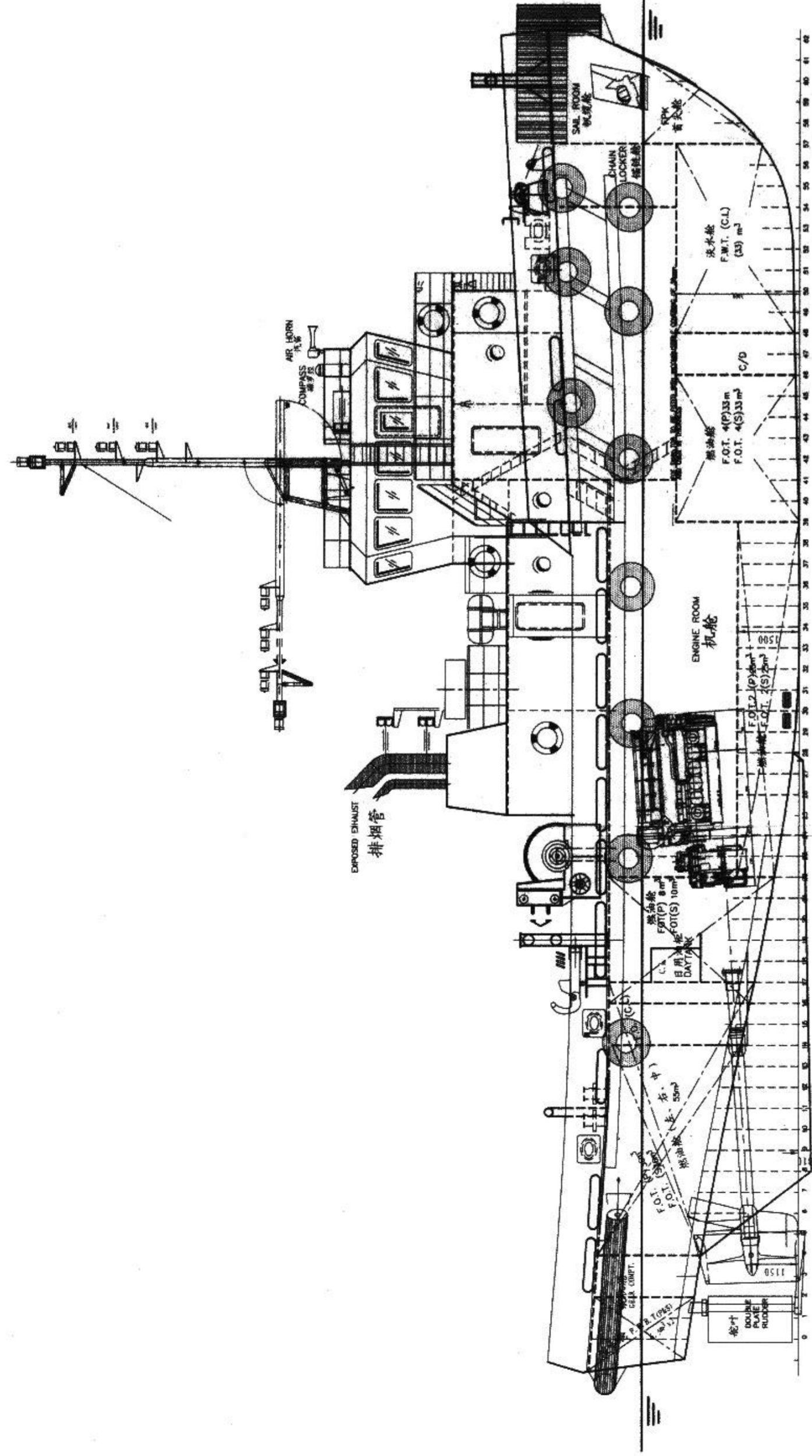
PERFORMANCE

MAXIMUM SPEED	: 11 knots
ECONOMICAL SPEED	: 9 knots
BOLLARD PULL	: 40 metric tons

CARGO CAPACITIES

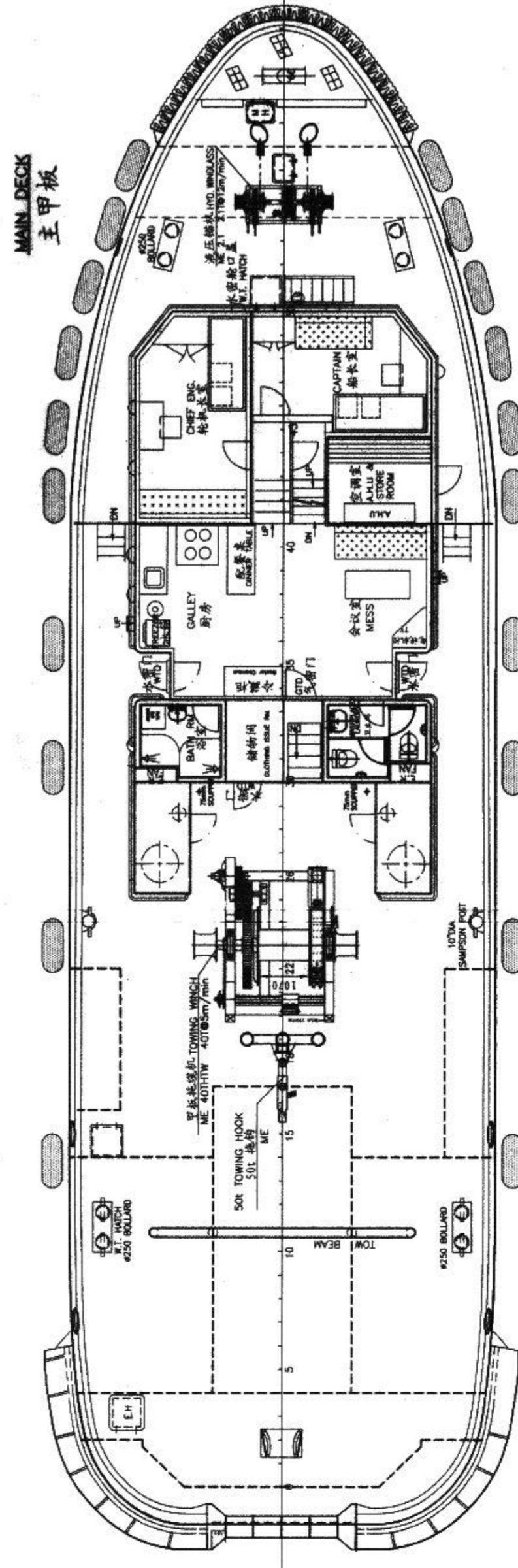
FUEL OIL	: Approx. 250.00 m ³
FRESH WATER	: Approx. 40.00 m ³
DIRTY TANK	: Approx. 3.80 m ³
ACCOMMODATION	: 12 Persons

Particulars given are entirely without warranty as to correctness and interested parties must satisfy themselves by inspection of ship's certificate or by other means of vessel specifications.

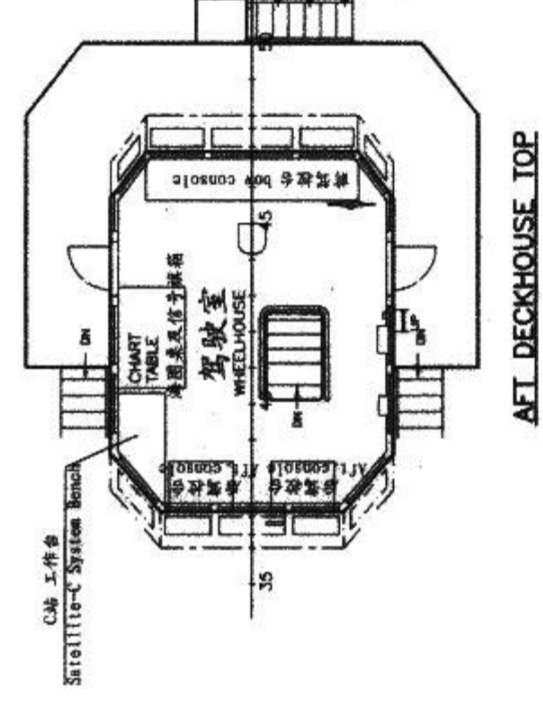
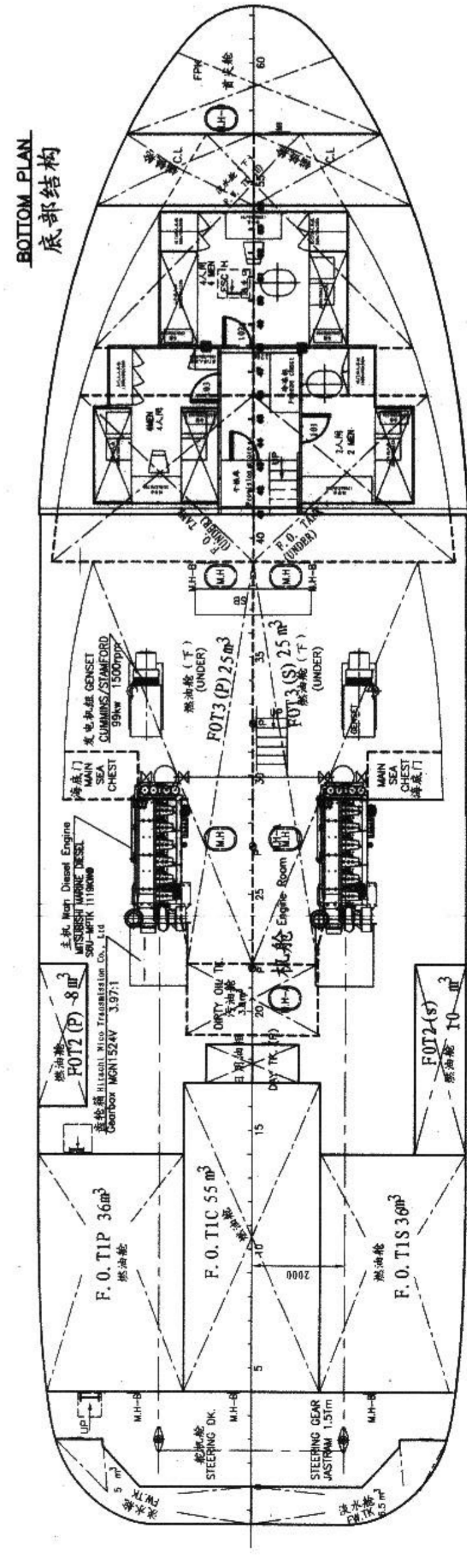
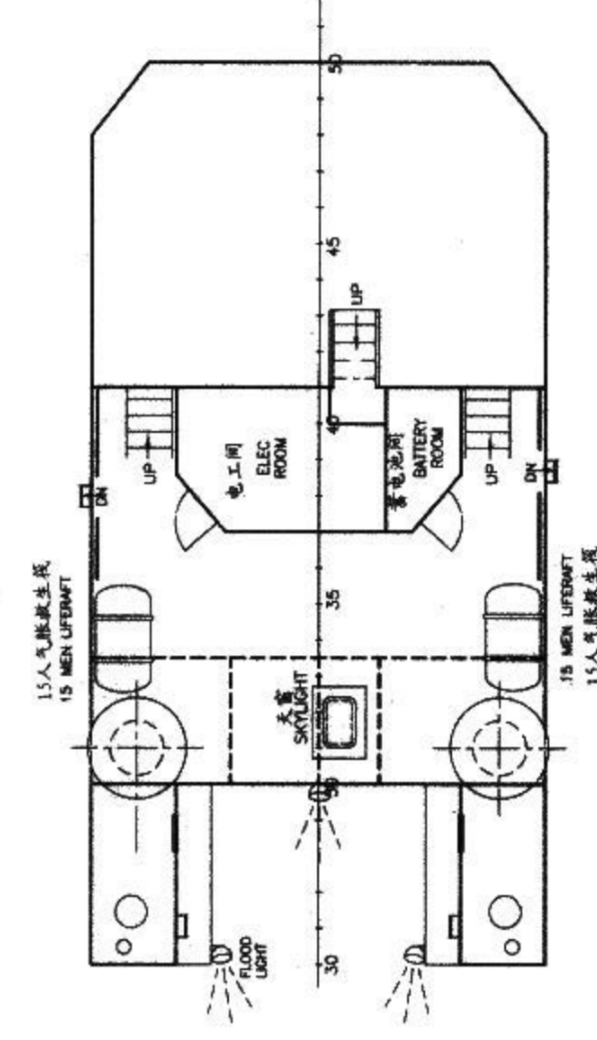


STERN VIEW
尾视

FRONT VIEW
船首



WHEELHOUSE DECK
驾驶室甲板



PRINCIPAL PARTICULARS
主要参数

LENGTH O. A 总长	32m
LENGTH W. L. 设计水线长	31.14m
BEAM MLD. 型宽	9.20m
DEPTH MLD. AMIDSHIP 型深	4.60m
DRAFT DESIGNED 吃水	3.80m
GROSS TONNAGE 总吨	NOT MORE THAN 300GT
MAIN ENGINE 主机	MITSUBISHI MARINE DIESEL
	S6U-MPTK 1119KW@1110rpmX2
GENNERY SETS 发电机组	CUMMINS/STAMFORD
	99KW/1500rpmX2
SPEED 航速	12.0KN
BOLLARD PULL 拖力	38T
COMPLEMENT 定员	12 MEN
F. O. 燃油	250m ³
F. W. 淡水	40m ³

SHIP'S COPY
REVIEWED
as indicated in
ABS Letter dated:
16 JUL 2007
ABS
SHANGHAI

CLASS AS ABS:
ABS Maltese Cross *A1 *AMS Circle E towing service for unrestricted service

DATE	MODIFICATION	REV	BY
SHIP:	32M Ocean Tug 3000HP		
TITLE:	总布置图 GENERAL ARRANGEMENT PLAN		
OWNER	SEA WIN MARINE PTE LTD		
BUILDER	芜湖大江造船有限公司 WUHU DAJIANG SHIPBUILDING CO., LTD.		
WORKING NO.	YTHW07-29	BUILDING NO.	QSA 1040/1041
CLASS	ABS		
DRAWN	唐442	CHECKED	胡晓军
INSPECTED	张坤	APPROVED	张坤
SCALE	1:100	DRAWING NO.	YTHW629-100-001
		REV	1/1

烟台海文船舶工程技术有限公司
YANTAI HAIWEN MARINE ENGINEERING & TECHNOLOGY CO., LTD.
Tel: 86-0535-2122419 Fax: 86-0535-2122417 E-mail: ythw629@163.com