



THONG YONG GROUP

P.O. Box 48709, Al Quoz Industrial Area 4, Dubai, U.A.E.

Tel #: +971 4 3417556 / Fax #: +971 4 3415899

Email : enquiry@tym-group.com / marine.admin@tym-group.com

THONG YONG

KIDA

31M Twin Screw Tug

PRINCIPAL PARTICULARS

OPERATING AREAS	: Sea Areas 1 + 2
TYPE OF SHIP	: Ocean Going Twin Screw Tug
FLAG	: Tuvalu
OFFICIAL NUMBER	: 28780813
CALL SIGN	: T2KJ4
IMO NUMBER	: 9508249
CLASSIFICATION	: GL (Germanischer Lloyd)
YEAR BUILT	: 2008
PLACE BUILT	: Sibuluan, East Malaysia
LENGTH OVERALL	: 31.00 m <101.68 ft>
REGISTERED LENGTH	: 28.50 m <97.00 ft>
BREADTH	: 9.00 m <29.52 ft>
DEPTH	: 4.00 m <13.12 ft>
DESIGNED DRAFT	: 3.20 m <3.20 ft>
GRT / NRT	: 294 / 89



PROPULSION SYSTEM

MAIN ENGINES	: CUMMINS KTA38-M2 MARINE DIESEL 2 x 1,200 HP @ 1,800 rpm (2 x 895kW)
GEAR BOX	: 2 x REINTJES WAF 562L / Ratio 5.947:1
AUXILIARY ENGINE	: 2 x CUMMINS 6BT5.9D (M)
ALTERNATOR	: 2 x STAMFORD UC.M274E1 Output: 80kW
FUEL OIL PURIFIER	: OTC 2-02-137 WESTFALIA GERMANY
OILY WATER SEPARATOR	: CYF - 0.5Y x 01
PROPELLERS	: 2 x SOLID 4 BLADES MANGANESE BRONZE <i>Completed with MILD S KORT NOZZLE</i>

PERFORMANCE

MAXIMUM SPEED	: 11 knots
ECONOMICAL SPEED	: 9 knots
BOLLARD PULL	: Max. 31.8 metric tons

CARGO CAPACITIES

FUEL OIL	: Approx. 235.00 m ³
FRESH WATER	: Approx. 33.00 m ³
BALLAST (F.W.)	: Approx. 36.00 m ³
LUBE OIL TANK	: Approx. 4.20 m ³
DIRTY OIL TANK	: Approx. 1.90 m ³
GEAR OIL	: Approx. 1.90 m ³
ACCOMMODATION	: 15 Persons

STERN TUBES & SHAFTING

- * Water Lubrication Stern Tubes with BTC Cutlass B
- * 2 x Length Stainless Steel (AISI 316) Tail Shaft

STEERING GEAR SYSTEMS

- *1 x 3.0 tons Electro-Hydraulic Steering Gear with Joystick (Joystick Steering + Emergency Helm)
- Double Steering Station (Bridge FWD and AFT)

TOWING

- | | |
|------------------------|---|
| ANCHOR WINDLASS | : 22mm U2 / ME 2.1 THWL22C330
Anchor Windlass c/w Double Gypsy & Double Drum |
| BOW ANCHOR | : 2 x Stockless each 570kgs |
| CHAIN CABLE | : 302.5m total length, 22mm dia, Grade 2 |
| TOWING HOOK | : 30T SWL Towing Hook Op |
| TOWING WINCH | : 30T Drum Pull and 100T Brake
Single Drum Towing Winch c/w Auto Wire Device & Drum
Capacity of 650m x 42mm dia wire. |

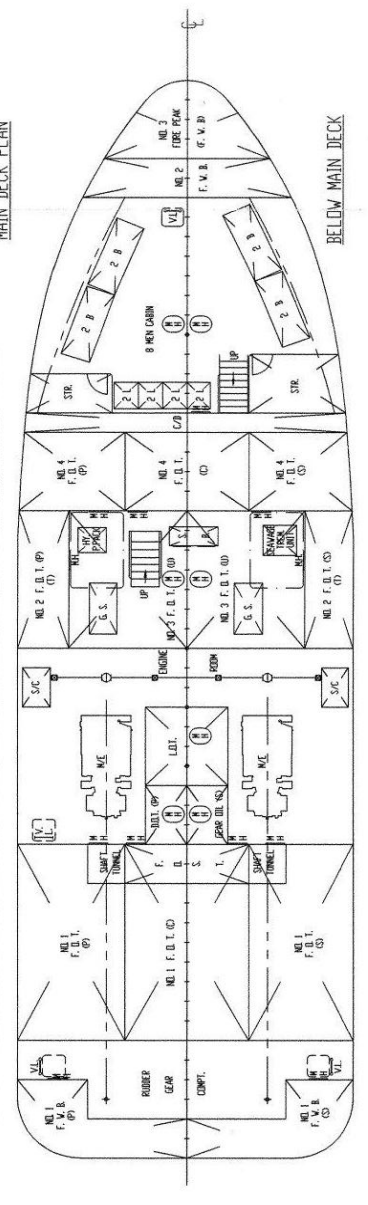
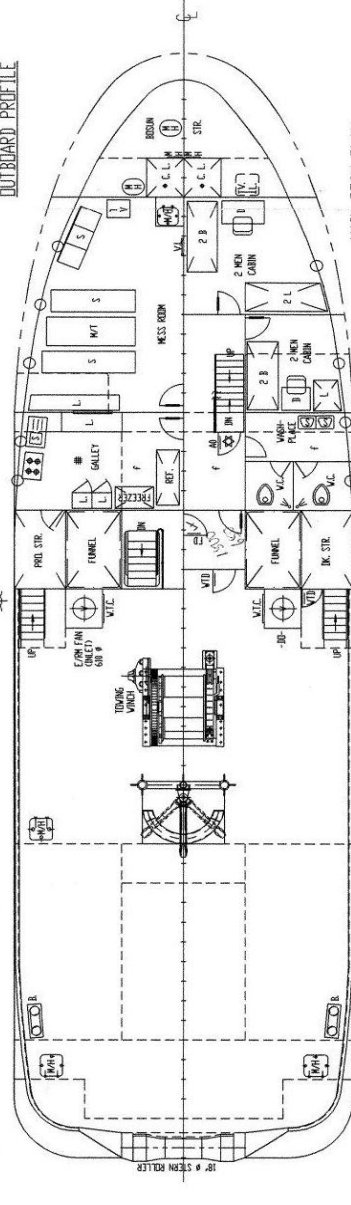
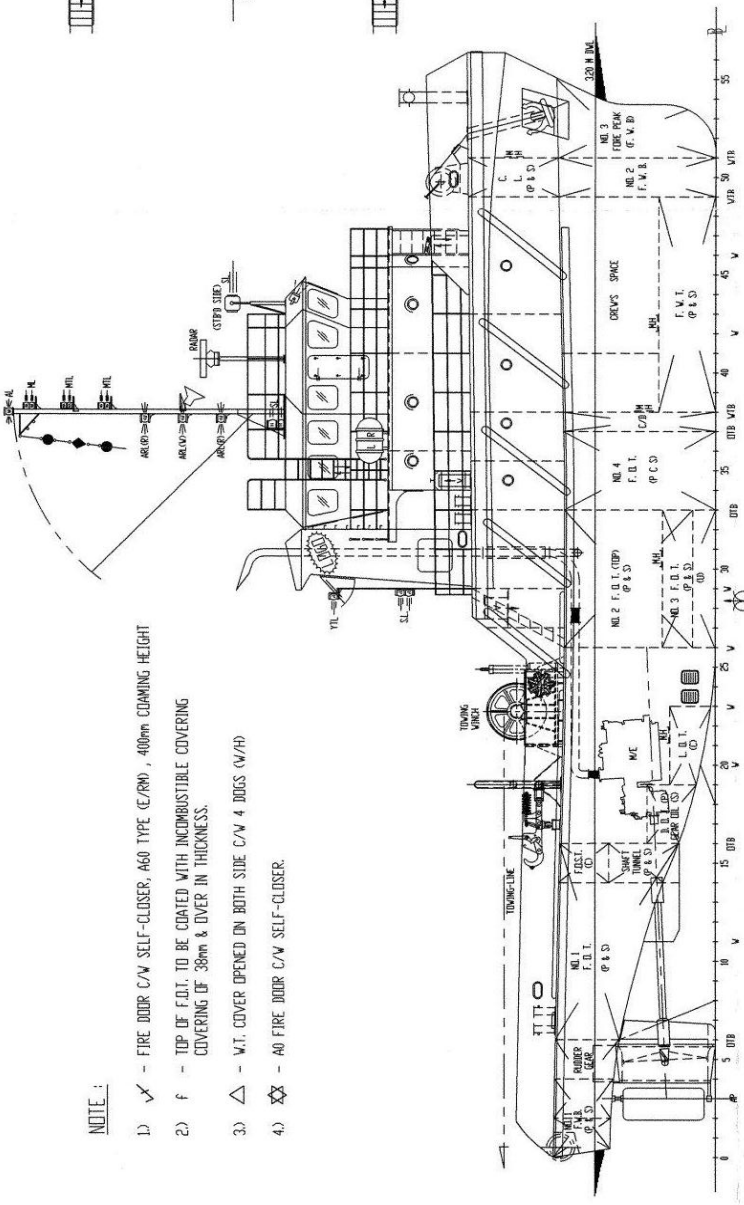
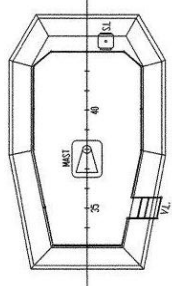
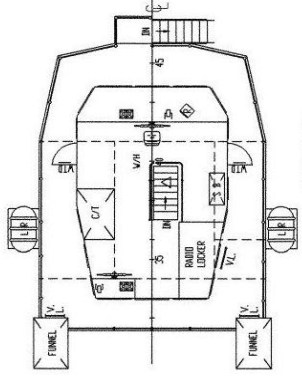
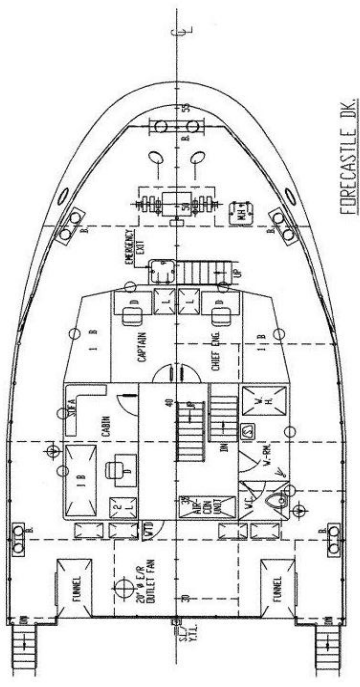
SOUND SIGNAL APPLIANCES & NAVIGATION EQUIPMENT

- | | |
|----------------------------|---------------------------------------|
| VHF RADIOTELEPHONE | : ICOM M-302 (SN: 0133924) |
| SSB TRANSCEIVER | : FURUNO FS-1503 (SN: 3556-1019) |
| 24N MARINE RADAR | : FURUNO 1715 (SN: 4316-9488) |
| GPS NAVIGATOR | : FURUNO GP 32 (SN: 4420-6212) |
| ECHO SOUNDER | : FURUNO FCV 620 (SN: 8058-7186) |
| NAVTEX RECEIVER | : FURUNO NX 300 (SN: 3550-6940) |
| WEATHER FAX | : FURUNO FX 408 (SN: 2718-1418) |
| MAGNETIC COMPASS | : DAIKO T-150B (SN: 3422) |
| EPIRB | : MC MURDO SMART FIND E5 (SN: 100-07) |
| 2 WAY WALKIE TALKIE | : ICOM IC-M2A (SN: 0213787/0213789) |
| INMARSAT C | : FURUNO FELCOM-15 (SN: 3533-9282) |

FIRE FIGHTING / LIFE SAVING APPLIANCES

- | | |
|---------------------------|--|
| LIFERAFT | : 2 x HNF-A15(96) for 25 Pax |
| LIFE BOUY | : SDF5556 (96) x 8 pieces |
| LIFE JACKET | : DF5564-1 x 16 pieces |
| FIREMAN'S OUTFIT | : DFX-I x 1 set with accessories |
| BREATHING APP. | : RHZK-6/30-II x 1 set |
| FIRE EXTINGUISHER | : 9 x 9kg ABC Dry Powder
1 x 45litre Trolley Foam |
| PORTABLE FIRE PUMP | : CF170F / 4.5HP, 3600rpm |

Particulars given are entirely without warranty as to correctness and interested parties must satisfy themselves by inspection of ship's certificate or by other means of vessel specifications.



PRINCIPAL PARTICULARS :-

- LENGTH O.A. :- 3100 M (10168 FT)
- LENGTH B.P. :- 2813 M (9229 FT)
- LENGTH V.L. :- 2957 M (9712 FT)
- BEAM MLD :- 9.00 M (29.52 FT)
- DEPTH MLD :- 4.00 M (13.12 FT)
- DESIGNED DRAFT :- 3.20 M (10.50 FT)
- ACCOMMODATION :- 15 MEN
- FUEL OIL :- 235.00 M³ (100% FULL)
- FRESH WATER :- 33.00 M³ (100% FULL)
- BALLAST (F.V.) :- 36.00 M³ (100% FULL)
- L. O. T. :- 4.20 M³ (100% FULL)
- D. O. T. :- 1.90 M³ (100% FULL)
- GEAR OIL :- 1.90 M³ (100% FULL)
- MAIN ENGINE :- 2 X CUMMINS KTA-38-M2
1200 BHP / 1740 RPM EACH
- GEAR BOX :- REINTJES VAF 562L1
5.947 : 1 RATIO
- GENERATOR :- 2 X 60 KW EACH 3/50/415
- FREE RUNNING SPEED :- 11 KNOTS (APPROX)
- DESIGNED B.P. :- 30 TONNES (APPROX)

for INFORMATION only
2007-05-21 --0604-07
Germanischer Lloyd

DATE	MODIFICATION	BY
DESIGNER	WANG SANG & ASSOCIATES SIN. BHD.	
(COMPANY NO:20294-D) MARINE DESIGN ENGINEERING & SUPERVISOR 2/F, FLOOR, 4C, LEONG JONG HONG, 96001, OFFICE NO: 3022, 3005 TEL: 604-220592, 364624 (D), 382375 (D), FAX: 604-329298 EMAIL: r.singh@jaya.org.my		
SHIP		
TITLE		
31M T. S. TUG GENERAL ARRANGEMENT		
DRAWN	TANG TEH HEE & SONS S/P. SIBU	NO. 01. 31
BUILDER	TEL + 60 45 700 + 4C	P.O.P. S'PORE
TRAD	UNRESTRICTED AREA	JOB NO. 0207
DRN	CHECKED	SCALE
Y1	PAUL WONG	SCALE
23/03/2007	1 : 100	W02025-07-6

This drawing and the information contained herein are the property of WANG SANG & ASSOCIATES SIN. BHD. They must not be used or reproduced in whole or in part without permission in writing.

- NOTE :
- 1) ✓ - FIRE DOOR C/W SELF-CLOSER, A60 TYPE (CRN) , 400mm CLIPPING HEIGHT
 - 2) F - TOP OF F.D.T. TO BE COATED WITH INCOMBUSTIBLE COVERING COVERING OF 38mm & OVER IN THICKNESS.
 - 3) △ - V.I. COVER OPENED ON BOTH SIDE C/W 4 DOGS (V/H)
 - 4) ✕ - A0 FIRE DOOR C/W SELF-CLOSER.